

Gallery
 19 March
 1973

Time Out March 16-22 1973 48

Gallery House
 fri 16 sat 17
 sun 18 march

LE GRICE
 new films
 multi-projection
 live performances

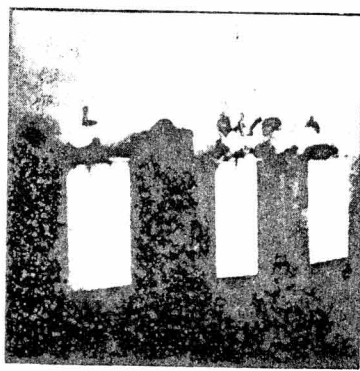
help and new
 pieces from
**RABAN CROSSWAITE
 EATHERLEY**

noon-6
Improvisations
 8-10.30
Evening Performances

GERMAN INSTITUTE 50 Princes Gate,
 Exhibition Road, London SW7



© Gallery House London
 50 Princes Gate, SW7 (589 7207)
 (South Ken tube)
 Fri to Sun:
 An exploration of projection and the
 relationship of pre-filmed material to
 current Time/Space by Malcolm Le
 Grice, David Crosswaite, William Raban
 and Gill Eatherley, plus spatial projection
 event by Annabel Nicolson. Entrance
 free, come any time during the day
 (noon to 8.00). From 8.00 to 10.30
 there will be a more formal show of
 Multi Projection films and live event
 film pieces. Worth turning up at the
 start for this. See Film News for further
 comment.



Real Film hits London 8
 From Monday September 3 to
 Sunday 16 over 80 independent
 film makers will be congregating
 in London to take part in a
 festival at the NFT and the ICA
 devoted to independent 'avant-
 garde' cinema. Their work repre-
 sents the best being done in the
 US, Canada, Germany, Italy,
 Holland, Belgium and England.
 Pictured above are the Filmak-
 tion group who will be present-
 ing expanded cinema at the

True Love Time Space

A group of film makers will be
 working at Gallery House (see
 clubs listings) from Friday to
 Sunday: Malcom LeGrice with
 William Raban, David Cross-
 waite and Jill Eatherley in one
 area; Annabel Nicolson in another.
 From noon to 6.00 there will be
 improvisations for up to four
 simultaneous projections, plus
 35mm slides and sound, which
 from time to time are liable to

stabilize themselves into 'instal-
 lation' pieces. From 6.00 to 10.30
 there will be a more formal show
 of multi-projection films and live
 event film pieces.

New pieces by Malcolm LeGrice
 will include 'Matrix,' involving
 four projections on to two adja-
 cent walls, with complex shadow
 work resulting from arranged
 walks through the space; 'Gross
 Fog,' 'Four Wall Duration,' and a
 new film 'White Field Duration.'
 He'll also probably show some of
 his earlier work if there's time.
 Other pieces to watch out for are
 Gill Eatherley's 'Sometimes Fan,
 Sometimes Window', a piece by
 William Raban which is 'shot,
 processed and projected in the
 same space' (?) and the spatial
 projections by Annabel Nicolson.
 It promises to be an original,
 strong and direct experience for
 the viewer, all the more in that it's
 free.

John Du Cane

19 Time Out March 16-22 1973