

Cres

2nd ann. january 1980

madelon hooykaas /
elsa stansfield
'transposed environment'
© copyright by
'white bird' and 'cres p.a.'

madelon hooykaas / elsa stansfield

'transposed environment'

location; basement 'metro' garage,
(cres studio) groningen, holland

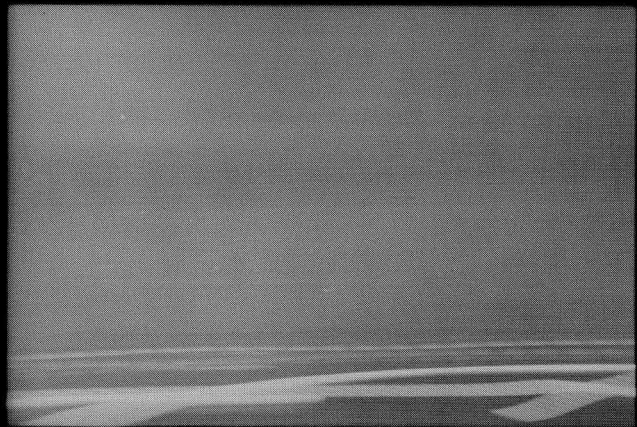
date: october 26 th 1979

time: 3 pm – 6 pm

tape duration: 27'30





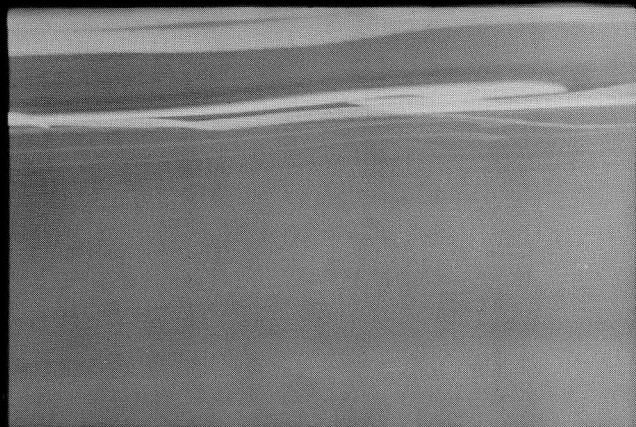
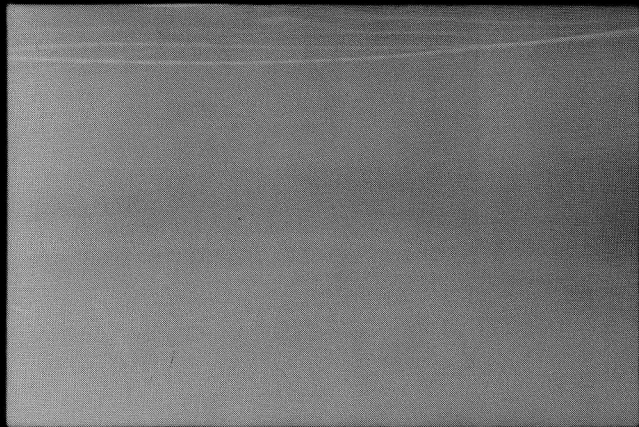


VCC ←

CC



5063



35

* 15A

* 36

* 36A







Cres

2nd ann. january 1980

madelon hooykaas /
elsa stansfield
'transposed environment'
© copyright by
'white bird' and 'cres p.a.'

