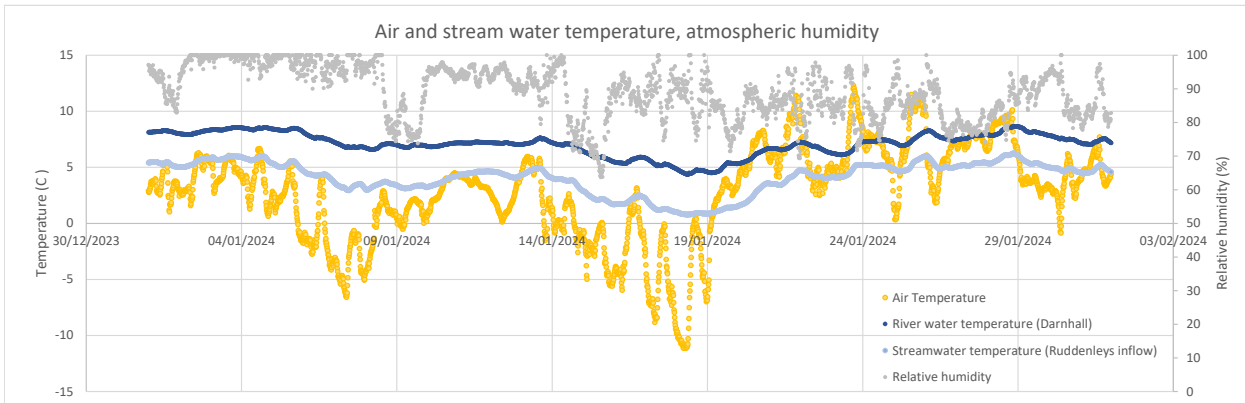
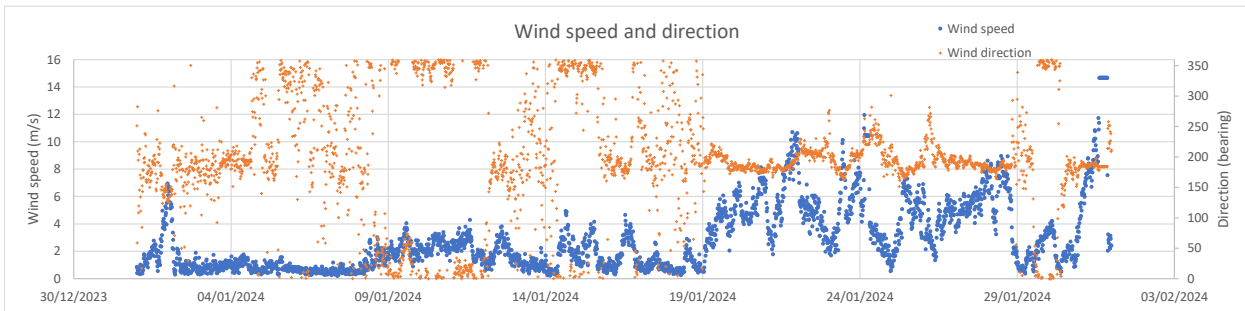
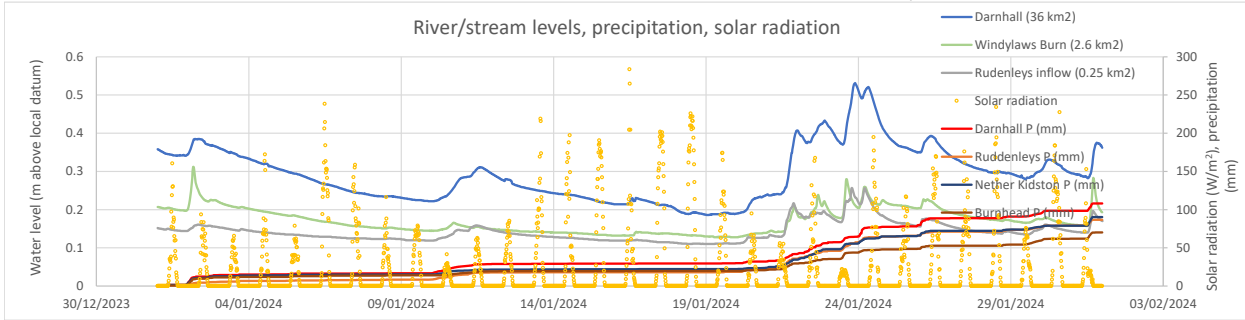




Monthly statistics	Hourly values				Daily values				Month	
	Max	Day/time	Min	Day/time	Max	Day	Min	Day	Average	Total
Precipitation (Darnhall Mains) (mm)	5.2	24 @ 03:15			15	22				108.0
Precipitation (Craigburn Farm) (mm)	3.6	23 @ 18:00			14.6	22				82.4
Precipitation (Wester Deans) (mm)	2.6	23 @ 15:45			10.2	22				70.2
Precipitation (Ruddenleys) (mm)	2.8	21 @ 16:30			13.2	21				86.8
Precipitation (Nether Kidston) (mm)	3.8	31 @ 14:00			13.6	22				90.2
Precipitation (Burnhead) (mm)	3.2	23 @ 12:30			9.2	2				70.2
Runoff depth (Darnhall Mains) (mm)										118.6
Air temperature (Darnhall Mains) (C)	12.1	23 @ 17:30	-11.1	18 @ 08:15	8.4	28	-5.9	18	2.8	
Relative humidity (Darnhall Mains) (%)									89.0	
Daily ETo evapotranspiration (mm)					0.7	28			0.2	6.4
Sunshine hours					5.3	18			1.5	45.7

Rain days (Darnhall, 1.0 mm threshold): 16



Up until 21st January, generally very settled conditions with little precipitation, and some very low temperatures. Wetter conditions on 21st-26th, but not leading to anything approaching flood conditions.

At 6 mm, the evaporative demand remains low, as per winter expectations. The water balance this month now appears impossible given the excess of estimated runoff over precipitation, but there remains ample evidence of catchment saturation. No major snowfall events.

Real-time data available at: <https://hydro-data.dundee.ac.uk/edleston>

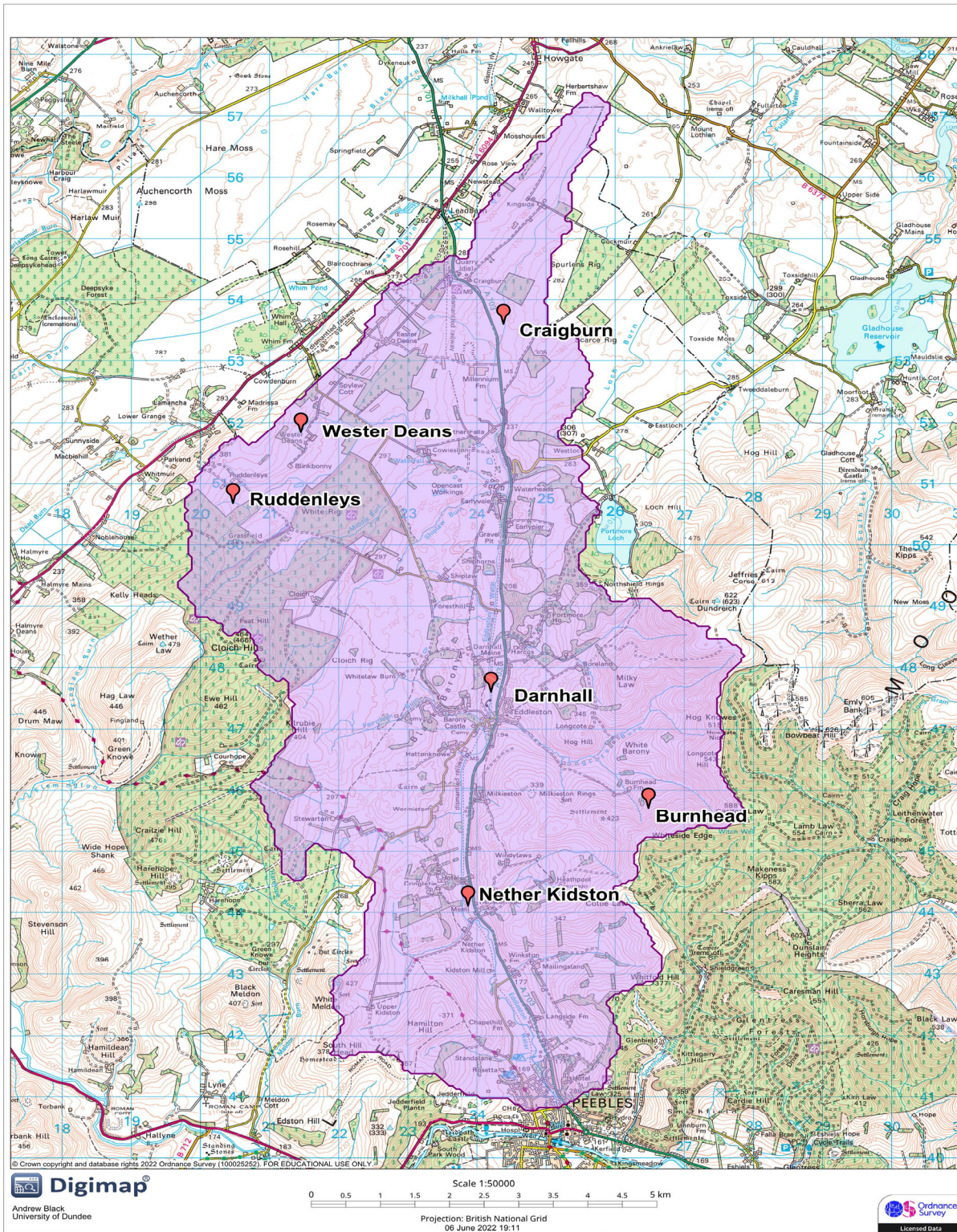


British Geological Survey



Forestry and Land Scotland | Coilltearachd agus Fearann Alba





## The Eddleston Water Project

Funded by the Scottish Government, Interreg and the Scottish Environment Protection Agency (SEPA), this project aims to reduce flood risk and restore the Eddleston Water for the benefit of the local community and wildlife.

The project involves river re-meandering, the planting of over 300,000 trees and the creation of new wetlands. This should slow the speed and impact of floodwaters as well as creating new wildlife habitat, such as improved spawning for salmon. Our project partnership is closely monitoring the results, including any reduction in flood risk for downstream communities.

The project is a partnership initiative led by Tweed Forum, with the Scottish Government, SEPA and University of Dundee. Other key partners include British Geological Survey, Nature Scot, Scottish Borders Council, the Forestry Commission, National Farmers' Union of Scotland, the Tweed Foundation, Forest Carbon and the Woodland Trust. Tweed Forum works closely with landowners and the local community so that everyone can contribute ideas and follow the project's progress.

For more information, see: <https://tweedforum.org/our-work/projects/the-eddlestone-water-project/>