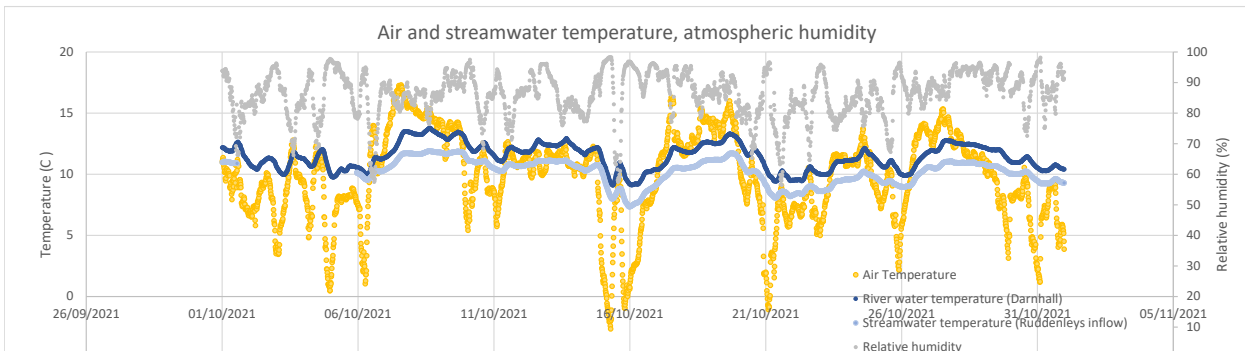
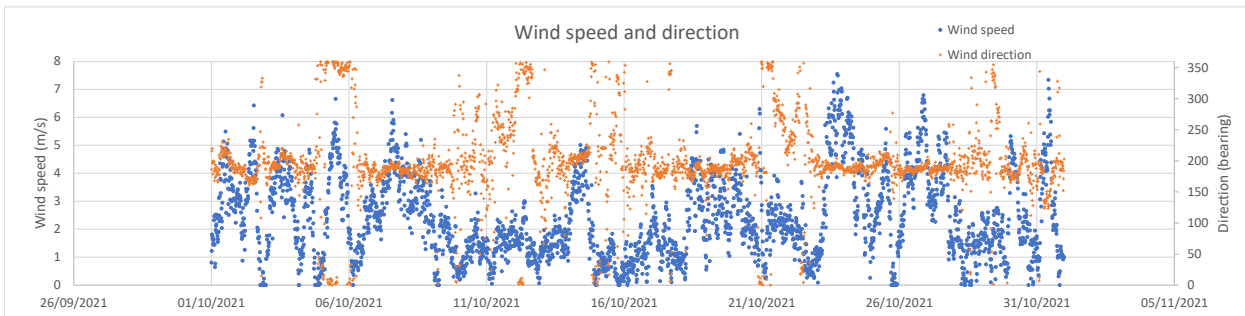
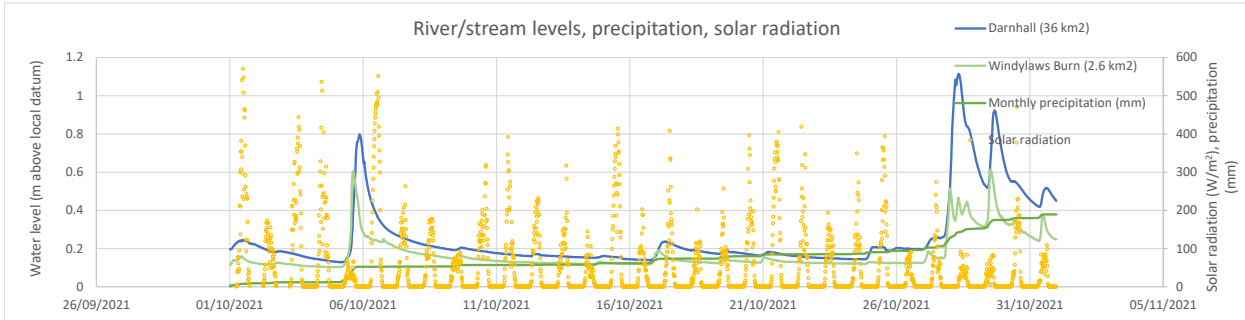




October 2021

Table with 5 main columns: Monthly statistics, Hourly values, Daily values, and Month. Rows include precipitation at various gauges, runoff depth, air temperature, relative humidity, and sunshine hours.



Notes

A dull, wet month. Rainfall was the highest October since the SEPA Shiplaw rainfall record began in 1990, with 189.4 mm at Darnhall (previous maximum 180 mm in 2002). Only August 1992 (192 mm) and December 2015 (205.8 mm) were wetter months at any time of year.

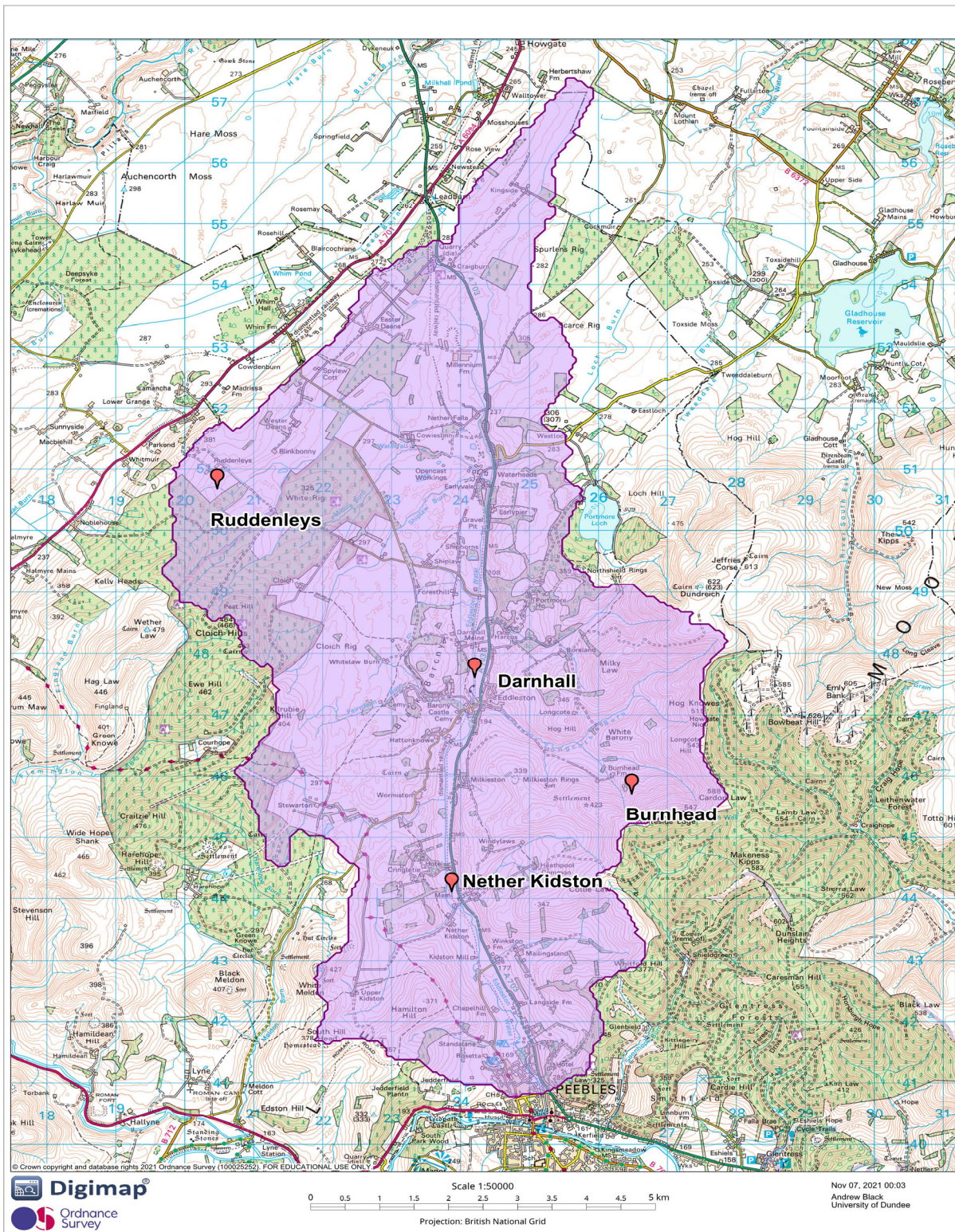
The month ends with a very wet catchment. The catchment runoff over the month, recorded at Darnhall, is equivalent to 68% of the month's precipitation (the corresponding figure for September was 16%).

The first frost of the season occurred in the early hours of October 15th.

All data subject to revision through a process continual review and quality assurance. Report prepared by Andrew Black and Rebekah Egan.

Real-time data available at: https://hydro-data.dundee.ac.uk/eddeleston





The Eddleston Water Project

Funded by the Scottish Government, Interreg and the Scottish Environment Protection Agency (SEPA), this project aims to reduce flood risk and restore the Eddleston Water for the benefit of the local community and wildlife.

The project involves river re-meandering, the planting of over 300,000 trees and the creation of new wetlands. This should slow the speed and impact of floodwaters as well as creating new wildlife habitat, such as improved spawning for salmon. Our project partnership is closely monitoring the results, including any reduction in flood risk for downstream communities.

The project is a partnership initiative led by Tweed Forum, with the Scottish Government, SEPA and University of Dundee. Other key partners include British Geological Survey, Nature Scot, Scottish Borders Council, the Forestry Commission, National Farmers' Union of Scotland, the Tweed Foundation, Forest Carbon and the Woodland Trust. Tweed Forum works closely with landowners and the local community so that everyone can contribute ideas and follow the project's progress.

For more information, see: <https://tweedforum.org/our-work/projects/the-eddlestone-water-project/>