

NOTE: FOR ILLUSTRATIVE PURPOSES ONLY—NOT LEGAL ADVICE

SAMPLE Regional Basic Law of the Sea (LOS) Analysis Presented by DOLFIN—Dundee Ocean and Lake Frontiers Institute and Neutrals	
Area of Interest (AOI):	South China Sea
Scale:	1:5,000,000
Projection:	Mercator
Datum:	WGS84
Ground Resolution:	0.25 meter
Data Sources:	
<p>—<i>Fugro Global Law of the Sea Database</i> (proprietary database comprising approx. 75 terabytes of underlying relevant digital Law of the Sea (LOS) information, covering A to Z for all LOS applications, Digital Data Inventory for detailed LOS Maritime/Marine Risk Analysis for 162 countries (152 conventional Coastal States (included in United Nations (DOALOS) List); three Former Soviet Republics (Caspian States, included in Fugro LOS List); seven African (shelf-locked) Great Lake States (included in Fugro LOS List));</p> <p>—<i>Global Drilling Info Oil & Gas Concession Blocks Database</i> subscription (this Oil & Gas information is incorporated into the <i>Fugro Global Law of the Sea Database</i>, allowing for detailed risk analysis anywhere in the world);</p> <p>—<i>CARIS LOTS (Law of the Sea)</i> software license (originally developed by Robert Van de Poll (Fugro N.V.))</p>	

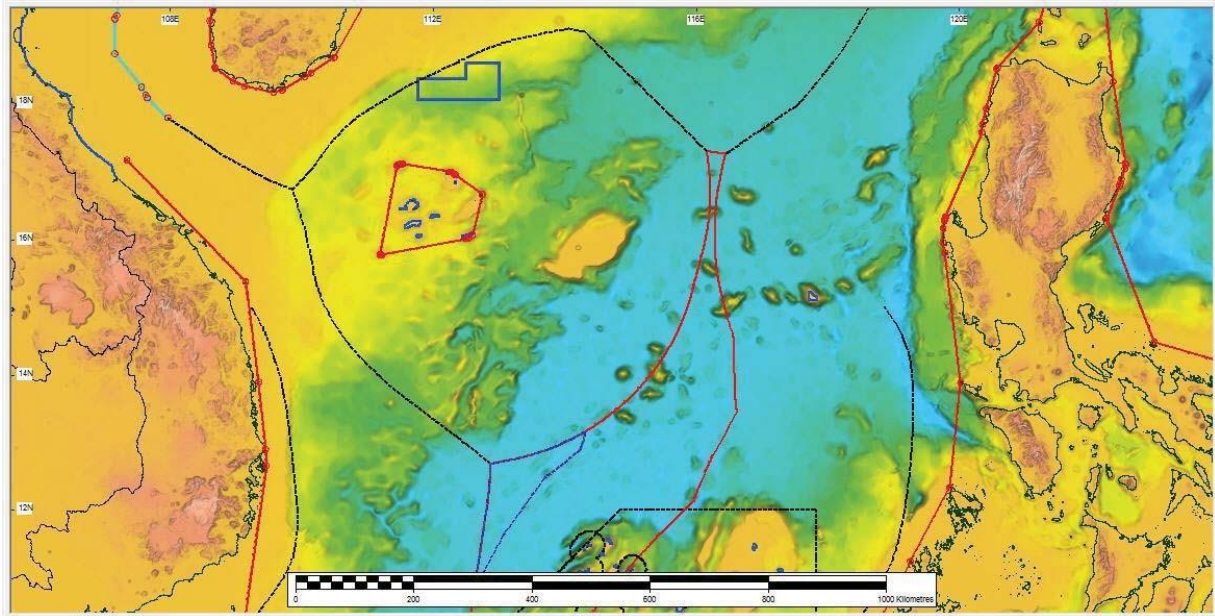
GLOBAL LOS DATABASE	
<u>LOS EEZ WATERS COVERAGE: approx. 169,000,000 km² (Geodetic)</u>	
<u>LOS LAYER #1: Global States’ LOS Territorial Sea Baseline Models (TSBM)</u>	
Global 162-country inventory (Straight / Archipelagic / Normal) Baselines ~ combinations of Gazetted & detailed Interpreted Coastal States’ Baselines.	
<u>LOS LAYER #2: Global States’ LOS Legal Limits</u>	
Global 162-country inventory for (i) 12-nautical-mile Territorial Sea (TS); (ii) 24-nautical-mile Contiguous Zone (CZ); and (iii) 200-nautical-mile Exclusive Economic Zone (EEZ).	
<u>LOS LAYER #3: Global States’ LOS Maritime Boundaries</u>	
Global 162-country inventory for (i) Treated (bilaterally agreed upon boundaries with maps and/or gazetted Geographic Coordinates); (ii) Hypothetical (unilateral: one Coastal State’s opinion with maps and/or gazetted Geographic Coordinates); and (iii) Hypothetical: Fugro internally-produced Strict Equidistance Lines (geodetic following the starting methodology employed by International Courts & Tribunals for disputed Maritime Boundary dispute resolution).	
<u>LOS ECS WATERS COVERAGE: approx. 35,000,000 km² (Geodetic)</u>	
<u>LOS LAYER #4: Global States’ LOS ECS (Extended Continental Shelf) Claims</u>	
Global 81-country inventory (comprising 100+ ECS claims currently deposited with the CLCS (Commission on the Limits of the Continental Shelf) of the assumed (Fugro analysis) 85 countries eligible for a ECS claim, for (i) LOS ECS Constraint Line (350-nautical-mile Limit and/or 2500 meters plus 100 nautical miles); (ii) LOS ECS Formulae Line (Morphological “Foot-of-the-continental-slope” (FOS) plus 60-nautical-mile line and/or Gardiner Sediment 1%	

NOTE: FOR ILLUSTRATIVE PURPOSES ONLY—NOT LEGAL ADVICE

Thickness Line); and (iii) Final Outer Limit ECS Line).

LOS LAYER #5: Global Oil & Gas PSC Concession Blocks (Drilling Info International (Monthly Updates; last Dec 2016), Onshore / Offshore

SUMMARY



- Scale: 1:5,000,000
- Vector Data Sources:
 - o World Vector Shoreline II Coastlines (**GREEN LINES**) ~ 1:75,000 scale
 - Covering parts of Vietnam, China and the Philippines
 - o LOS Territorial Sea Baseline Model (Type: Straight) = **RED LINES** along coastlines with **Red Small Circles** *(Gazetted Geographic LOS Legislation)
 - Covering parts of Vietnam, all of China and all of the Philippines (in this Figure)
 - o LOS Territorial Sea Baseline Model (Type: Normal) = **BLUE LINES** along coastlines (Hypothetical (interpreted) using best available Digital Data sources, i.e., combinations of present-day Vector Shorelines and/or Nautical Charts and/or Regional Satellite Imagery and/or Hi-Resolution Commercial Satellite Imagery)

NOTE: FOR ILLUSTRATIVE PURPOSES ONLY—NOT LEGAL ADVICE

- Covering parts of Vietnam, China (parts of the Paracel Islands and parts of the Philippines (only in the Spratly Islands, not the mainland))
- LOS Treated Maritime Boundaries = **LIGHT BLUE LINES** with **Red Small Circles** *(Gazetted Geographic LOS Legislation)
 - Covering the Gulf of Tonkin (parts of China vs Vietnam)
- LOS Hypothetical (Unilateral) Maritime Boundaries = **BLACK DASHED LINES** deriving from combinations of Historical Maps and/or Gazetted Geographic Coordinates (Note: in the above Figure, these are the lines seen running just offshore from Vietnam and the Philippines, and also the “Square Box” drawn around the Spratly Islands)
 - 1600’s Claimed Historical South China Sea 9-dashed Line Maritime Boundary
 - Philippines’ Presidential Decree Claiming all the Spratly Islands
- LOS Hypothetical Maritime Boundaries = **BLACK DASHED LINES** mathematically (geodetically) produced using CARIS LOTS Geodetic Strict Equidistance Line Principles, using the various applicable Territorial Sea Baseline Models (combinations of both Straight and/or Normal Baselines) for each respective “pair” of Coastal Frontages
 - China vs. Vietnam (south extension of Gulf of Tonkin Treaty)
 - China vs. Vietnam (assuming disputed Paracel Islands were still controlled by Vietnam ~ Northern Loop)
 - China vs. Vietnam (assuming disputed Paracel Islands were as they are (present day) controlled by China ~ Southern Loop)
 - China (Taiwan) vs. Philippines (assuming disputed Paracel Islands were as they are (present day) controlled by China)
- LOS Legal Limits = **RED SOLID LINES** (center of the above Figure) mathematically (geodetically) produced using CARIS LOTS Geodetic 200-nautical-mile limit Line Principles, using the various applicable Territorial Sea Baseline Models (combinations of both Straight and/or Normal Baselines) for each respective Coastal Frontages & LOS ECS Claims = **BLUE DASHED LINES**
 - China at the present time has not submitted any ECS claim for the South China Sea, but rather only up near Japan and South Korea as China claims the whole South China Sea, and therefore China does not accept that any EEZ LOS limits exist in the South China Sea

NOTE: FOR ILLUSTRATIVE PURPOSES ONLY—NOT LEGAL ADVICE

- Vietnam has formally and officially submitted an ECS claim (see Blue Line beyond the Vietnamese 200-nautical-mile EEZ Limit Line)
 - Malaysia and Brunei have formally and officially submitted ECS claims (beyond each of their respective 200-nautical-mile EEZ Limit Lines) just south of the extent of the above Figure's coverage, but this does factor into any South China Sea LOS analysis.
- LOS Global Oil & Gas PSC Concession Blocks = **DARK BLUE SOLID LINE** (center of the above Figure). This is the PSC block that we understand BP jointly held with CNOOC (as 49% held by BP and 51% held by CNOOC). Its locations can be easily seen to be 100% inside the present-day China-claimed waters. It does, of course, lie mostly south of the Vietnamese unilateral-claimed Maritime Boundary Line; however, no real maritime boundary disputes have been seen to occur this far inside and north of the present-day held Paracel Islands (by China), but a number of LOS boundary disputes have been seen to affect many of the blocks that lie along the eastern hypothetical maritime boundary lines shown in the above Figure.
-