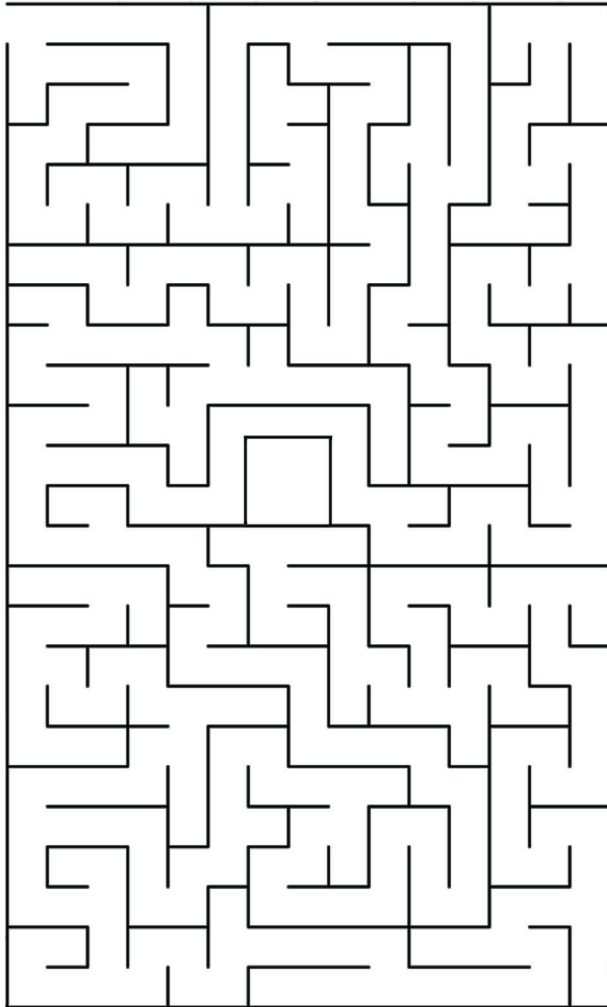


**SEARCHING FOR
A NEW MEDICINE
ACTIVITY BOOK**

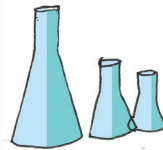
NAME: _____

RESEARCH MAZE

Start

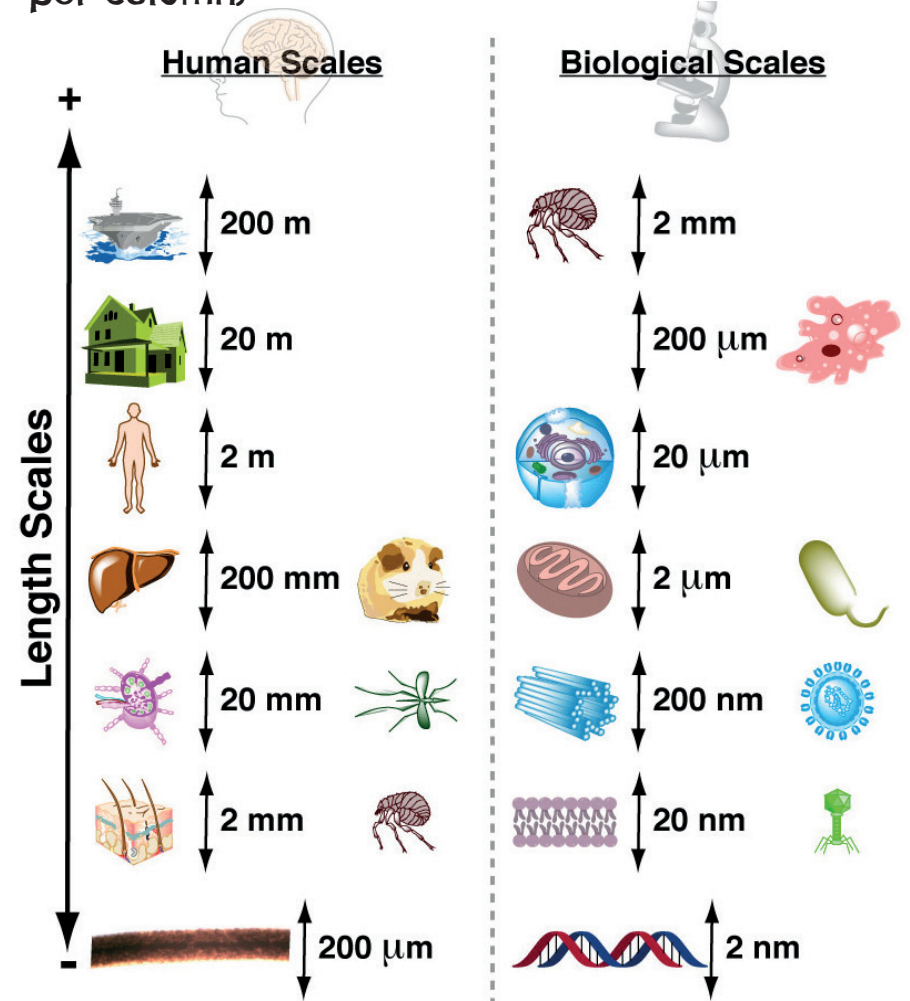


End



Biological and Human Scales

Molecular and cellular biology scales compared to human scales (approx 5 orders of magnitude per column)

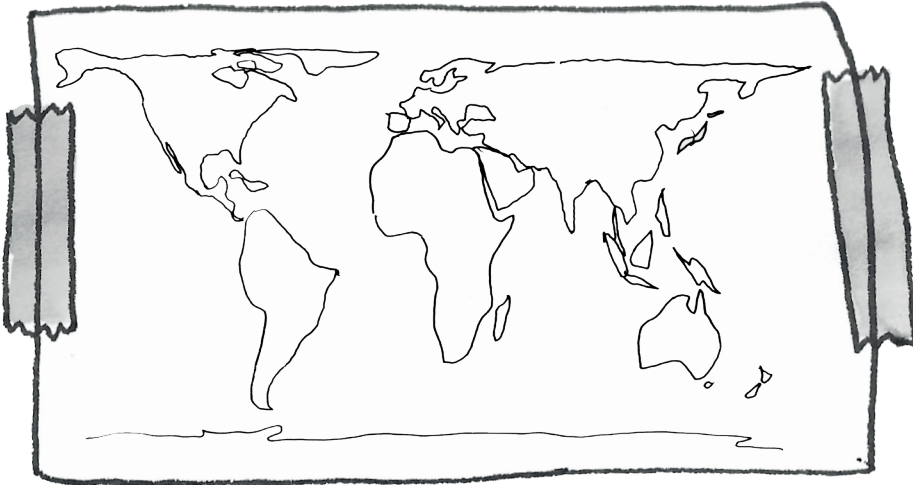


Human Scale Key: Aircraft Carrier (200m), 3-story House (20m), Human (2m), Liver/Gerbil (200mm), Lymph Node/Mosquito (20mm), Skin/Flea (2mm), Hair thickness (200μm)

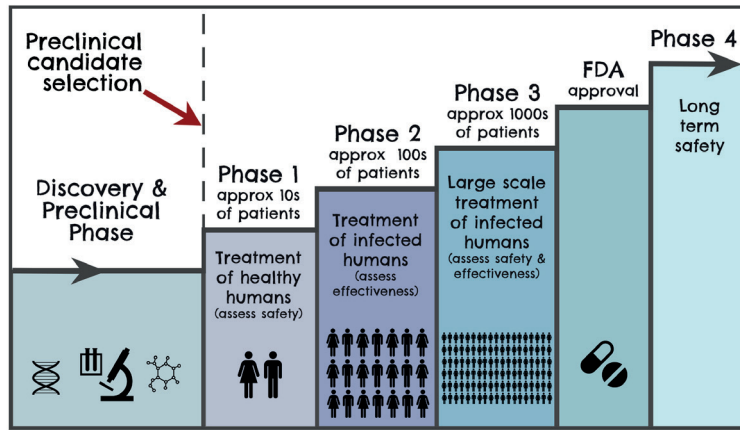
Biological Scale Key: Flee (2mm), Amoeba (200um), Eukaryotic Cell (20um), Mitochondria/Bacteria (2um), Centriol/Large Virus (200nm), Cell Membrane/Small Virus (20nm), dsDNA thickness (2nm)

by Eugene Douglass & Chad Miller - <https://www.practicallyscience.com/intuiting-biological-scales-using-human-scales/#more-53>

WHERE DOES LEISHMANIASIS OCCUR?

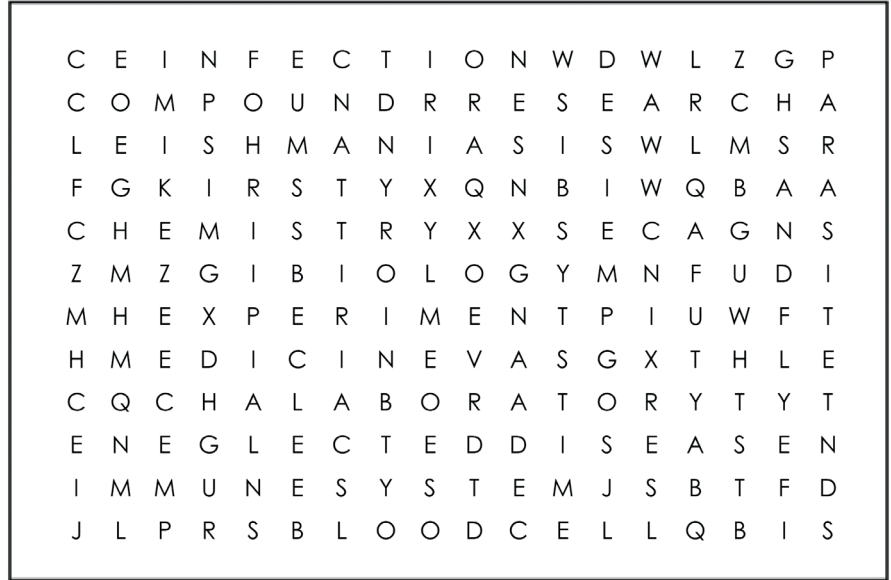


THE DRUG DISCOVERY PATHWAY



This pathway typical takes 10-20 years

WORDSEARCH



Find the following words in the puzzle.

SANDFLY
CHEMISTRY
BLOOD CELL
COMPOUND
LABORATORY
IMMUNE SYSTEM

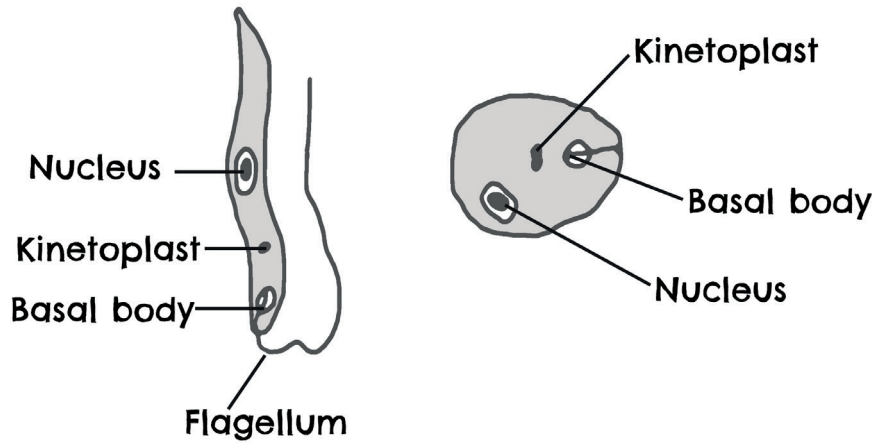
INFECTION
KIRSTY
EXPERIMENT
LEISHMANIASIS
MEDICINE
NEGLECTED DISEASE

PARASITE
RESEARCH
BIOLOGY
TRANSMITTED

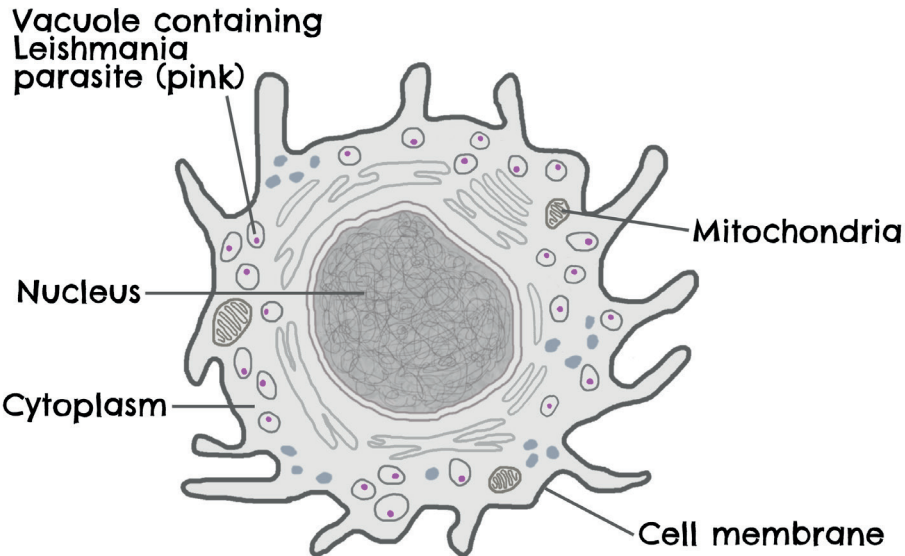
LEISHMANIA PARASITES

in insects

in humans

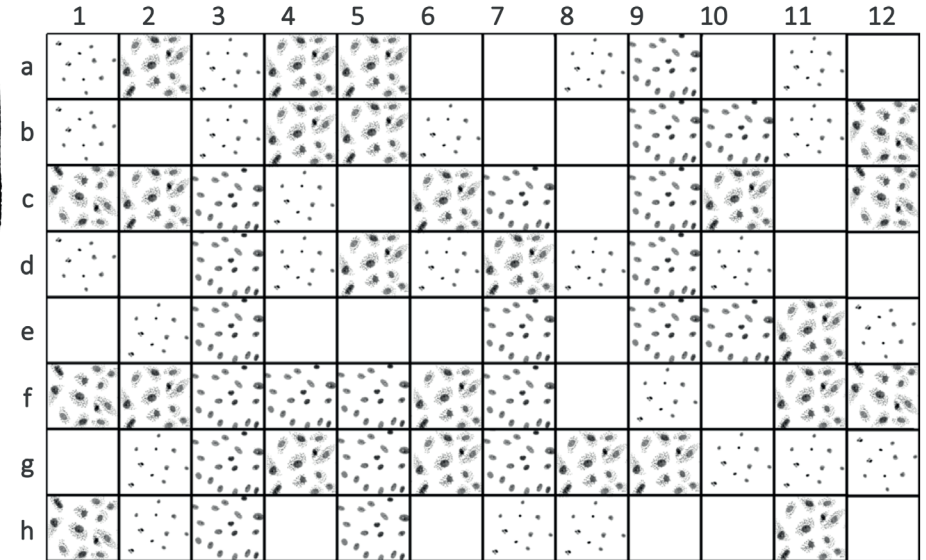


PARASITES INSIDE MACHROPHAGE CELL



IMAGES OF A 96-WELL SCREENING PLATE

Colour all the wells that contain healthy cells with no parasite infection, IMAGE B in the KEY below.



KEY:

